

LSU

COLLEGE OF ART & DESIGN
STAIRWELL PROPOSAL

CONCEPT STATEMENT

Located on the northwestern portion of the College of Art & Design building at Louisiana State University sits a monotonous, quiet stairwell. The project called to consider the atmospheres, moods and lighting found in the stairwell. The process began with a group effort to study the effects of dusk, day and night on the stairwell as well as create a model to study before personal projects took place. The final redesign was to fully create a sense of brain stimulation to all wandering throughout the stairwell. A key feature are the cutouts seen in the wall connecting the outside to the inside. This portion of the design is to refer to the dialects of inside and outside and the sense of connection and curiosity as to what is outside or inside. Since this project is mainly focused on the lighting aspects of the stairwell and how to design with mainly lighting features, a bold purple LED was chosen. The hue of the purple light is set to change with the different times of day: morning, day, and night. Morning being more of a red-purple, day being purple and night being a blue-purple. In this way, the design will create a space so intriguing to the students and faculty here that they will no longer want to take the elevator. They will want to take that trip through the stairwell and fuel their mind and set a fire to their creative side before journeying to their studios.



Event Space

Bibliothèque Publique Centrale d'Amsterdam



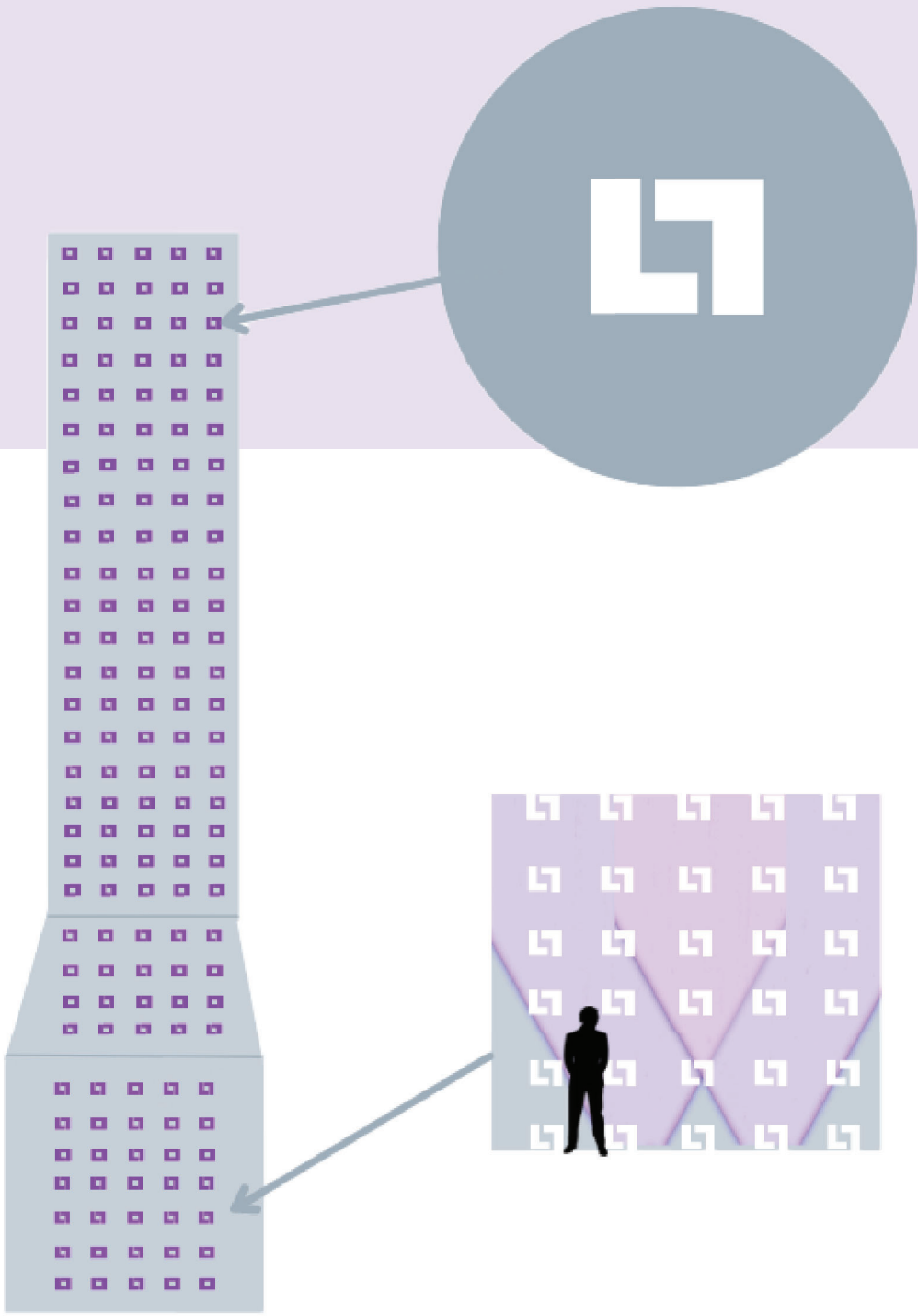
The Running Bean Café



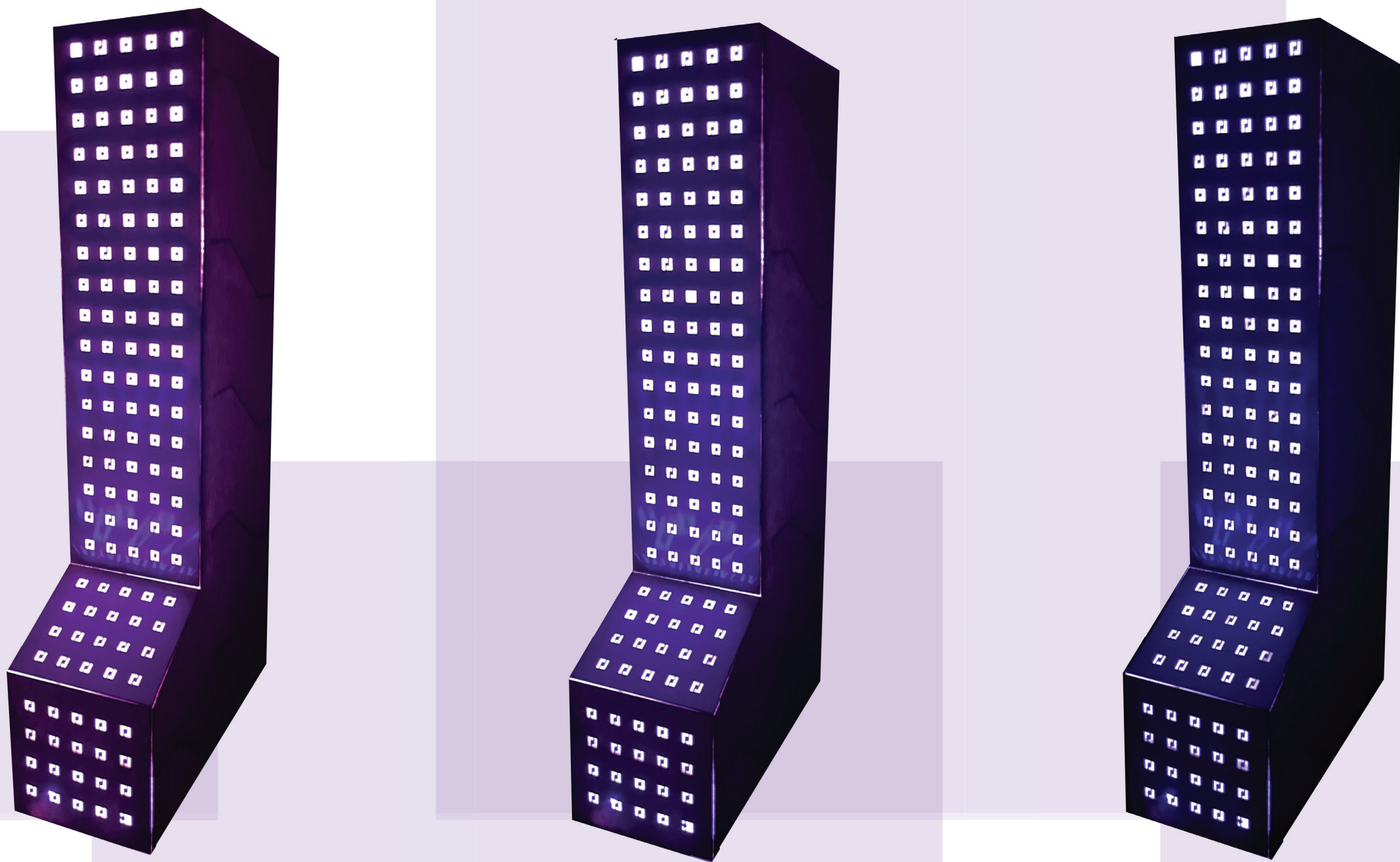
Vadodara Bungalow



Magic Stair Lighting



VIEW OF STAIRWELL ON LEVEL 04



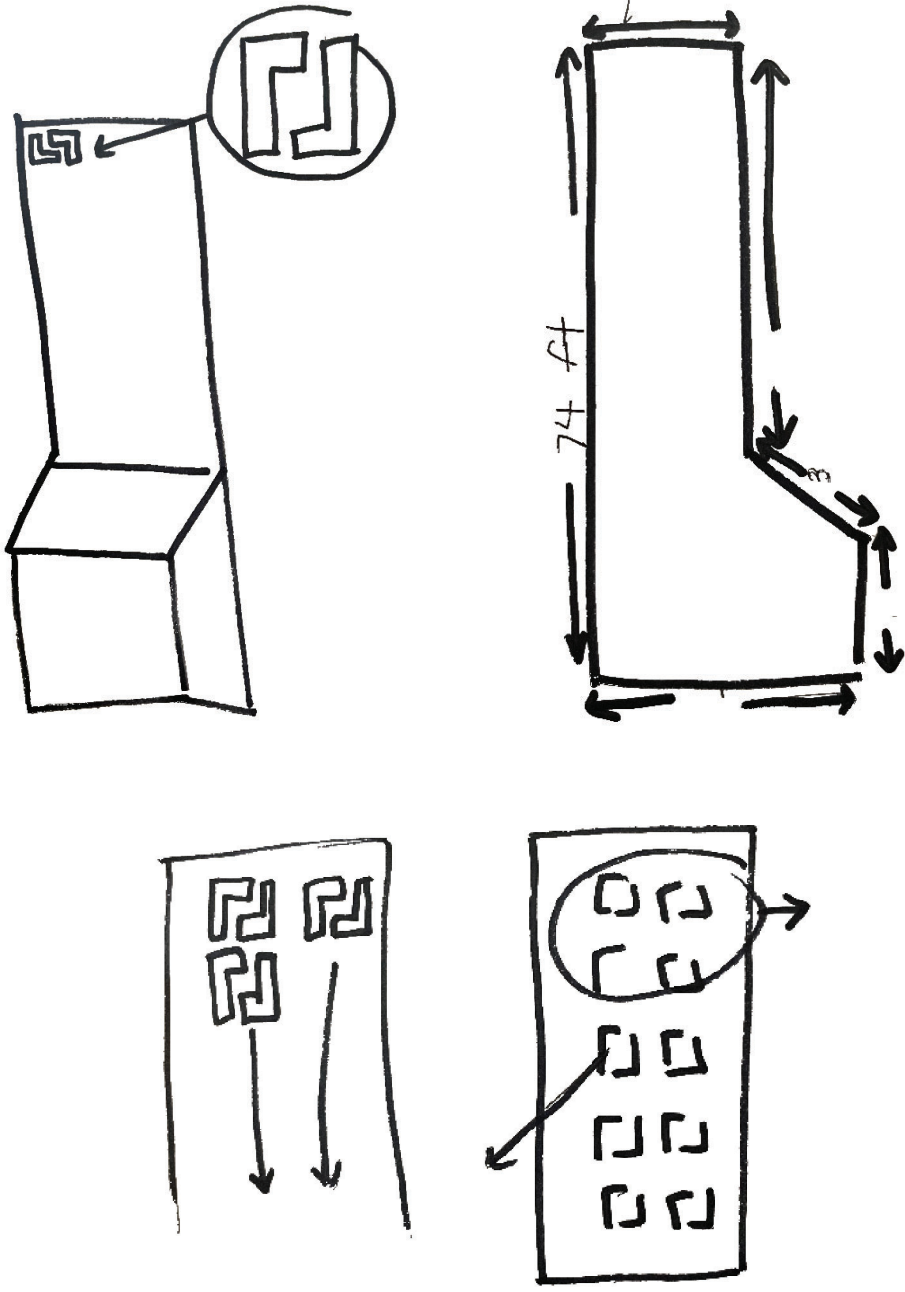
LED COLOR STUDY

Since this space is small and really only being affected by the way the light works within the space, I want the hue of the purple to change with the different times of day: morning, evening, and night. There are three main purples I want to highlight: red-purple, purple, and blue-purple. With morning emitting the red-purple hue, day emitting the purple and night emitting the blue-purple.

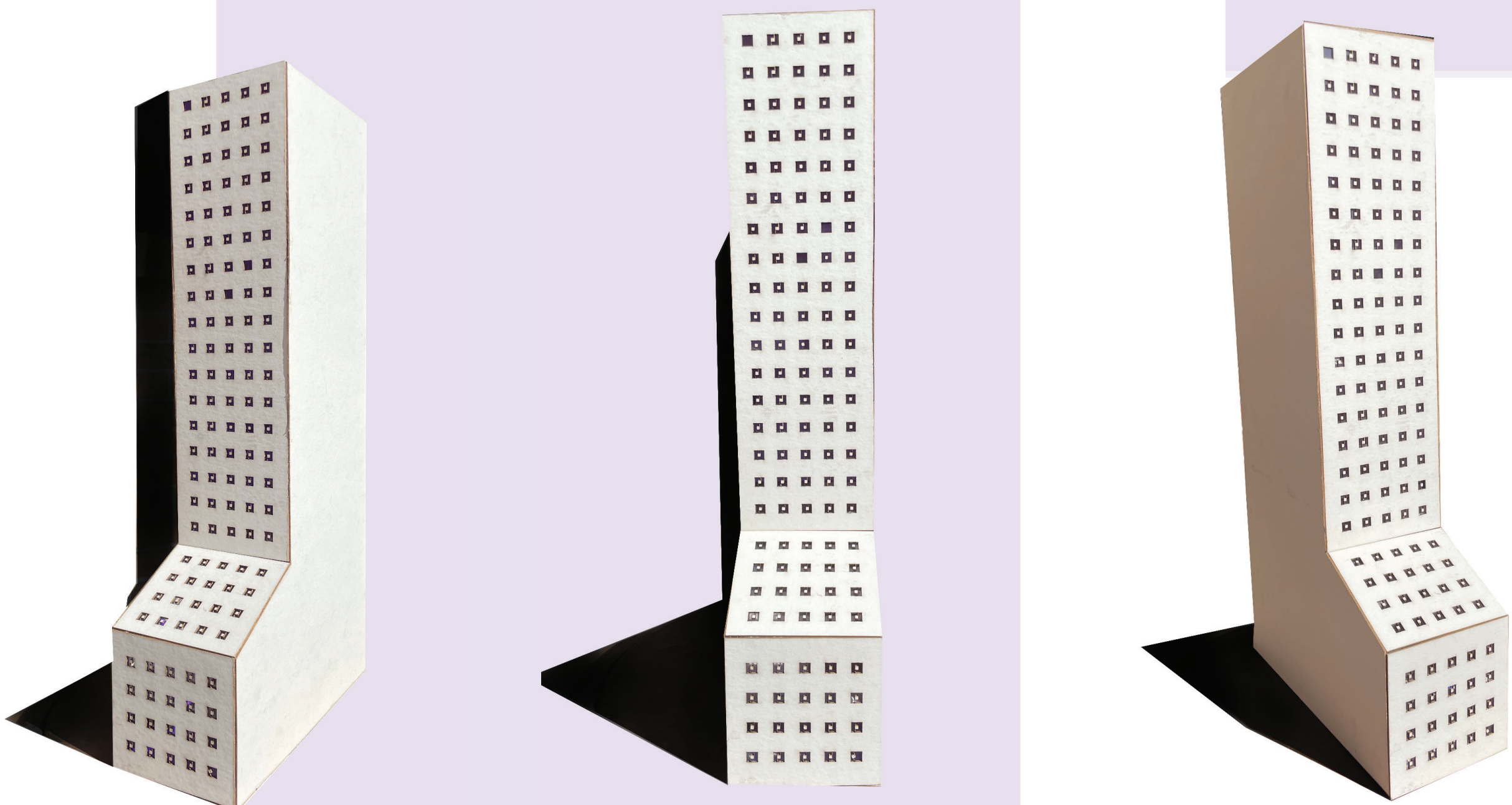
LIGHTING/COLOR CONCEPT

In my design I used the color purple as the main color of the LED lights seen in the stairwell. My inspiration is drawn not from the university's colors but from the significant effect purple has on human health. Emotionally, purple ignites imagination and mystery within us. Purple Affects humans positively by means of evoking creativity. This is what the Design Building here at Louisiana State University needs. There is a lack of creativity as far as the environment goes. I want to create a space that lights up not only the stairwell but the creativity and inspiration within all the students and faculty in the building.

DESIGN INSPIRATION



COLOR CHANGE STUDIES



DAYLIGHT STUDIES: 4:00PM



LUMILUM 120V Color Changing LED Strip Lights

LUMILUM 120V LED DMX Wall Controller

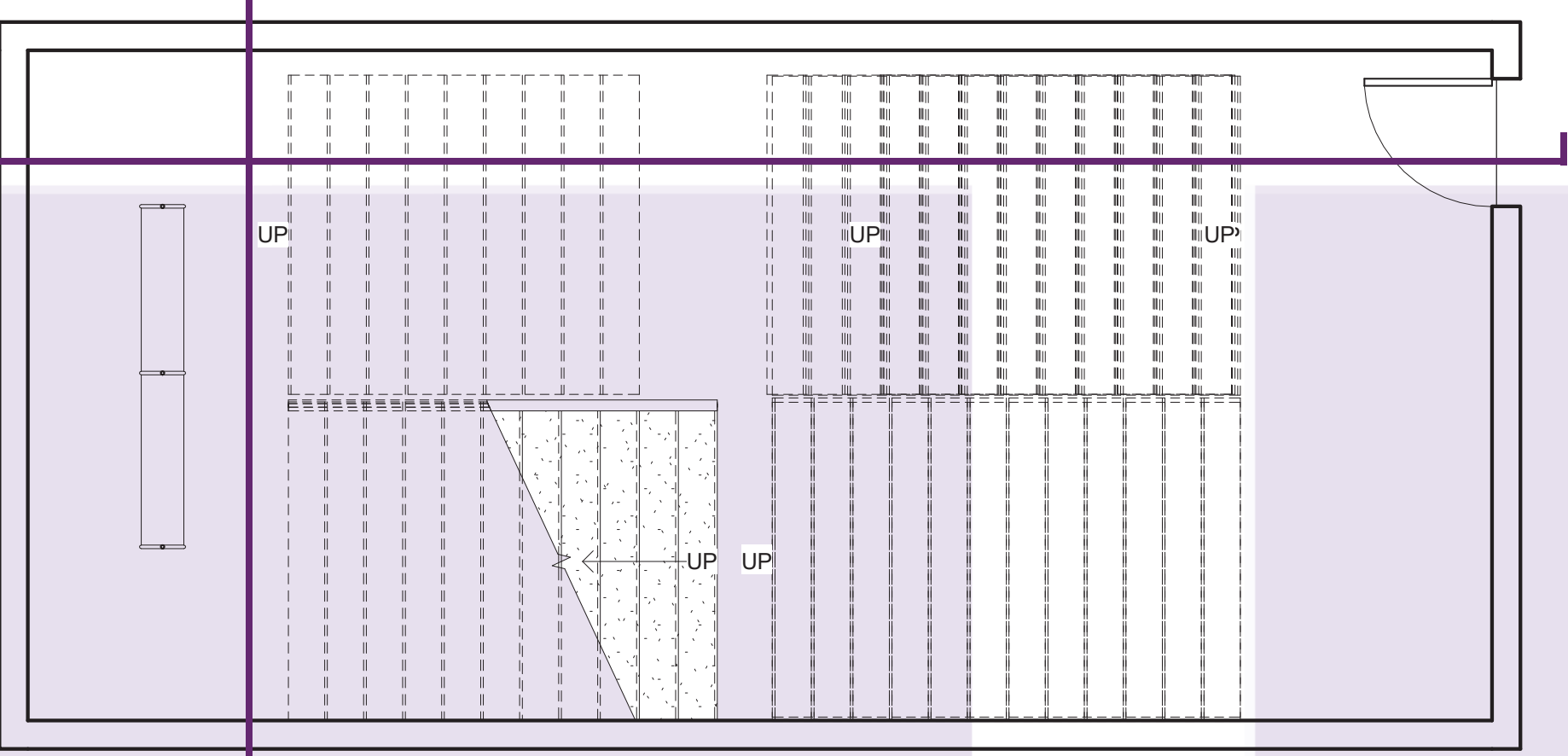
LUMILUM 120V LED DMX Controller Decoders

LUMESTAR 44" RGB LED Wall Washer



FOCUSED COLOR CHANGE STUDIES

PROCESS WORK



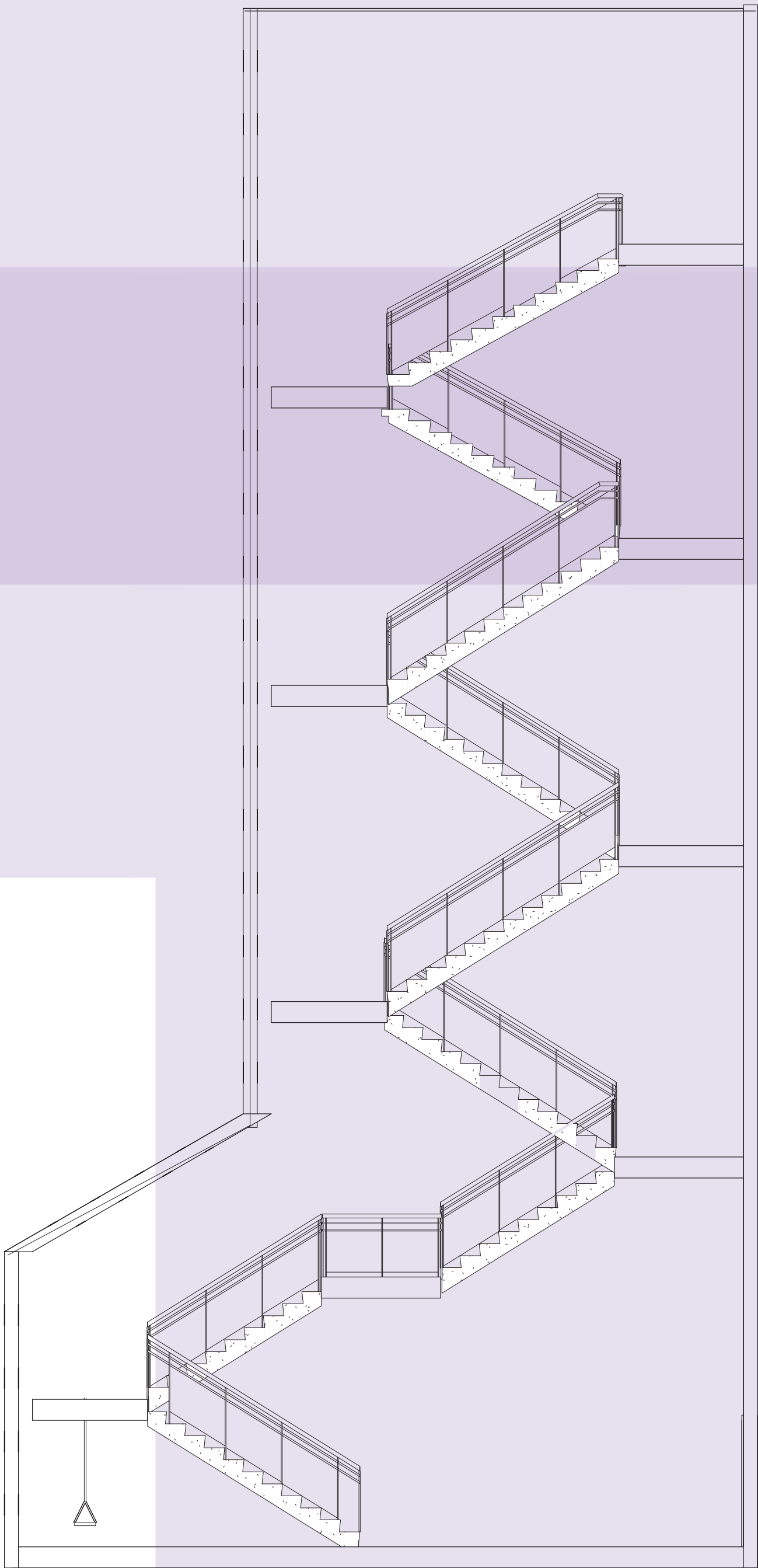
LEVEL 01 PLAN

SCALE 1/4=1'-0"



SECTION A-A

SCALE 1/2=1'-0"



SOUTH ELEVATION

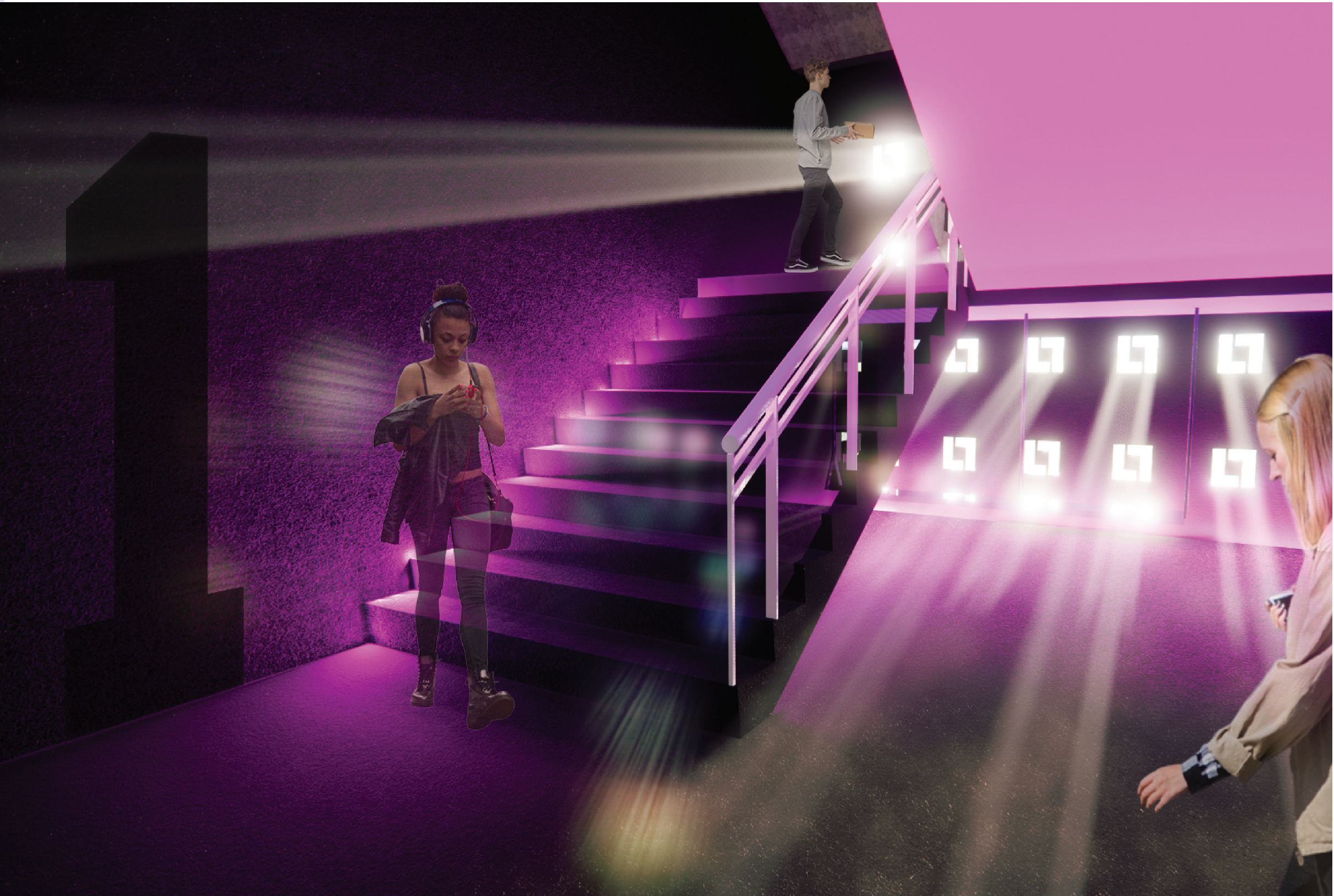


SECTION B-B

SCALE 1/2=1'-0"



VIEW OF SWING: LEVEL 01



VIEW OF ENTRANCE TO LEVEL 01 OF STAIRWELL