

MARGUERITE EPPLING



LOUISIANA STATE UNIVERSITY

# La Casa del Giglio

THE LILY HOUSE

# SCOPE OF WORK

**Building:** Ex Monastero di Sant'Orsola

**Location:** Via Taddea, 14, 50123 Firenze FI

**Area:** 182,986.48 sq ft (17,000m<sup>2</sup>)

**Industry Type:** Healthcare (day center for elders)

**Baseline standards as defined by your choice:** space standards, code requirements, regulatory issues

**Design Form Givers:** social

**Specialty/Focus:** Color theory, wayfinding/signage, sensory design

**Research Methods:** articles, precedent studies, websites



# THESIS

The scope of this project was to evaluate and study the current situations found in Alzheimer/dementia healthcare facilities and how to combat these living situations through implementing a design concept that focuses on the patients as people and not as patients.

The proposal to showcase this in the design was to mesh emotion with functionality. The functionality is to come from the design and the emotion is to be an outcome of the design.

In order to achieve this, I had to consider the needs of the occupants as well as their own personal emotions. With the use of color, biophilic design, sensory design and wayfinding, this will be attainable. I want to emphasize the life these people have left, rather than reminding them of their personal timer ticking away.





## DEMOGRAPHICS

- Italy is home to one of the few countries with the oldest populations (meaning 65+)
- Tuscany has a relatively older population than the rest Italy
- In Italy, more than 1 million people are living with dementia





## SPECIALTY/FOCUS

- Color theory, wayfinding, sensory design and most of all, biophilic design
- Sensory room

In an excerpt I found, researchers found four color design strategies were stated in an effort to improve this visual literacy through color design for individuals with dementia:

1. Strong Color Contrast Between Design Elements
2. Familiar Residential Homelike Colors and Design Archetypes
3. Biophilia-Inspired Color Design
4. Circadian-Colored Lighting



# PROJECT CONSTRAINTS

- Accessibility to multiple levels
  - stairs
  - may not be able to incorporate elevator
- Historical Preservation



# PROGRAM

\*see email for  
PDF version

[illegible]

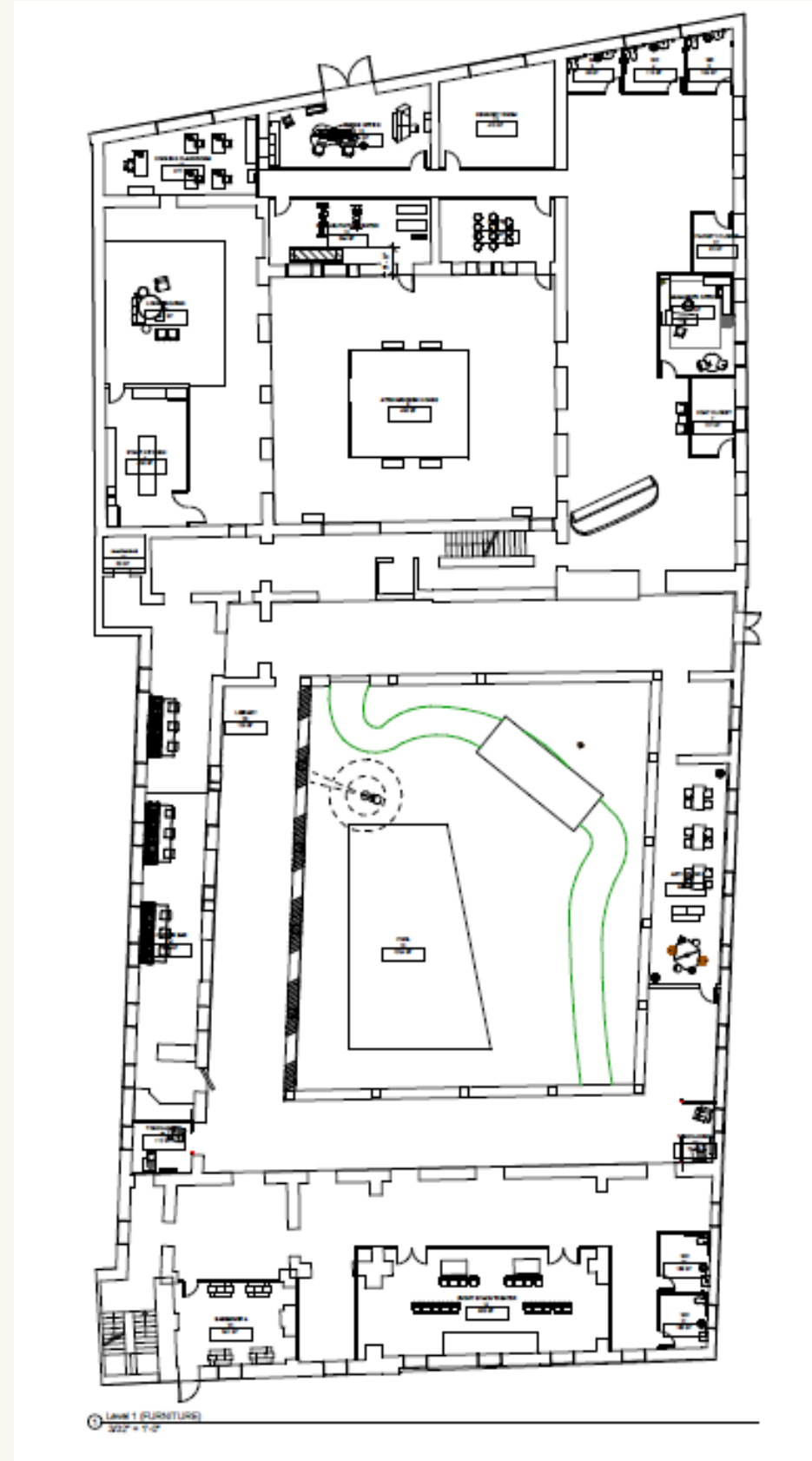


## INVESTIGATIVE QUESTION

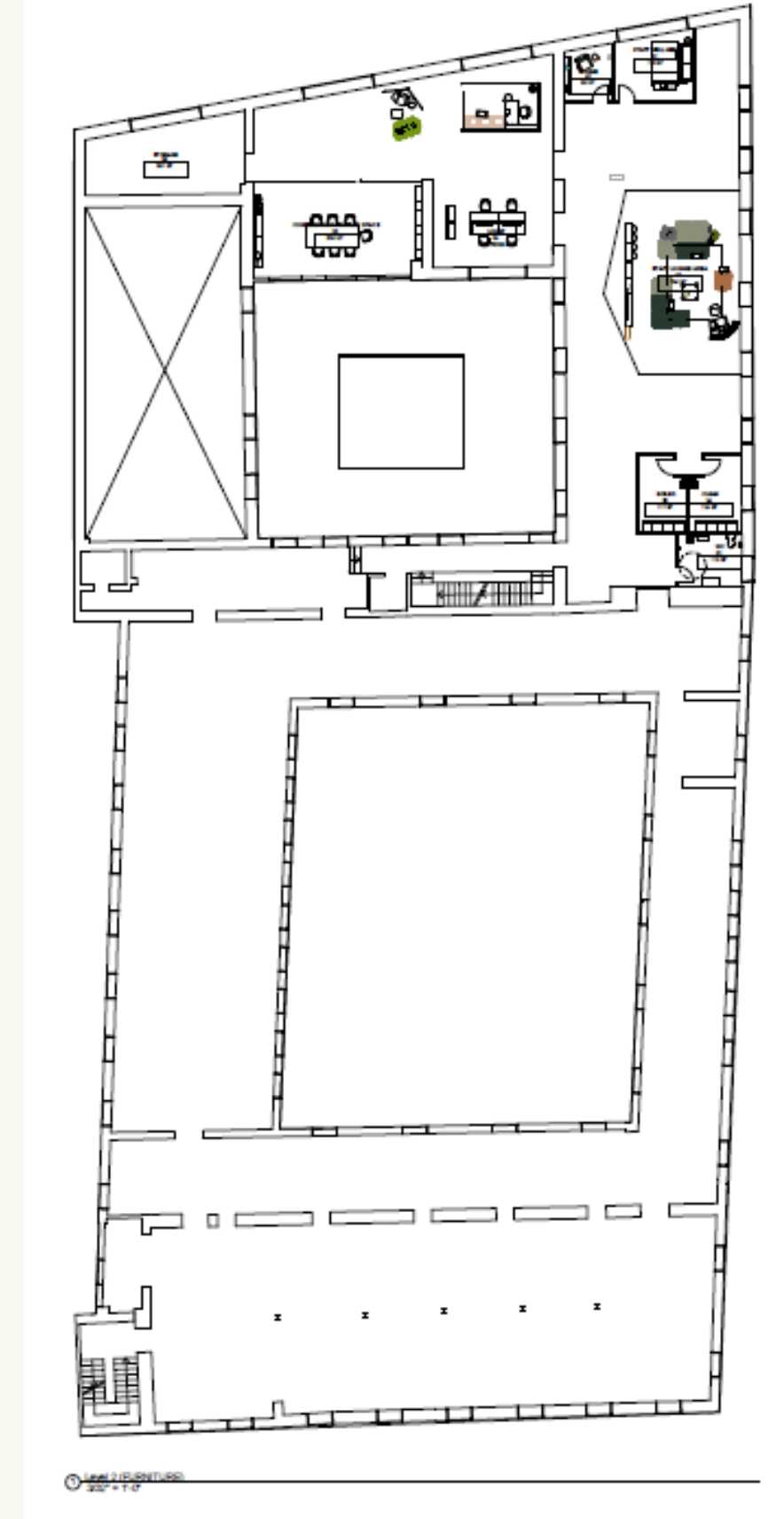
How can the design of  
Alzheimer/dementia healthcare  
facilities aid in shifting the focus  
from ***how long*** people live to  
***how*** people live?



# ORIGINAL FLOORPLANS



LEVEL 00-NTS

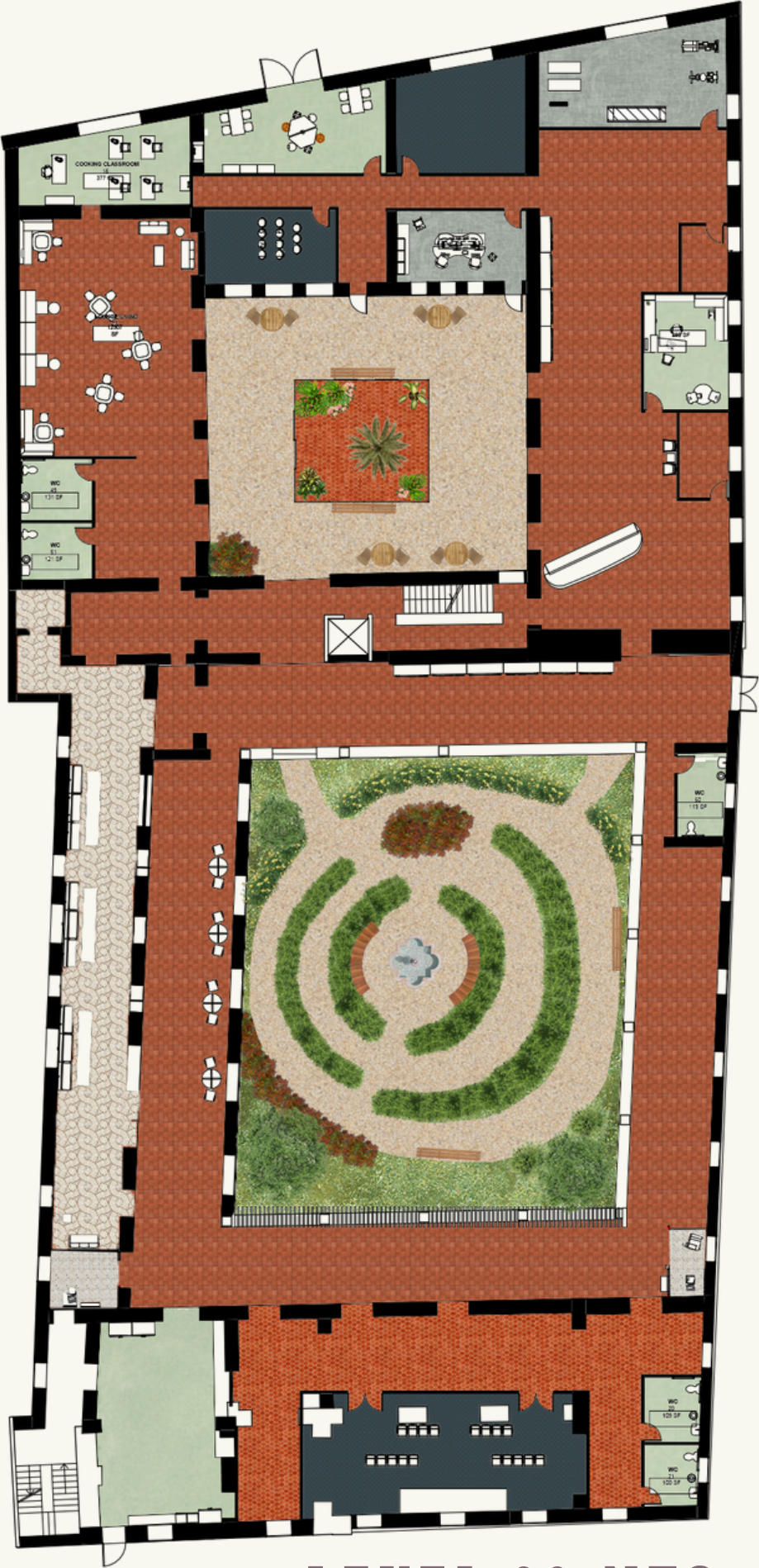


LEVEL 01-NTS

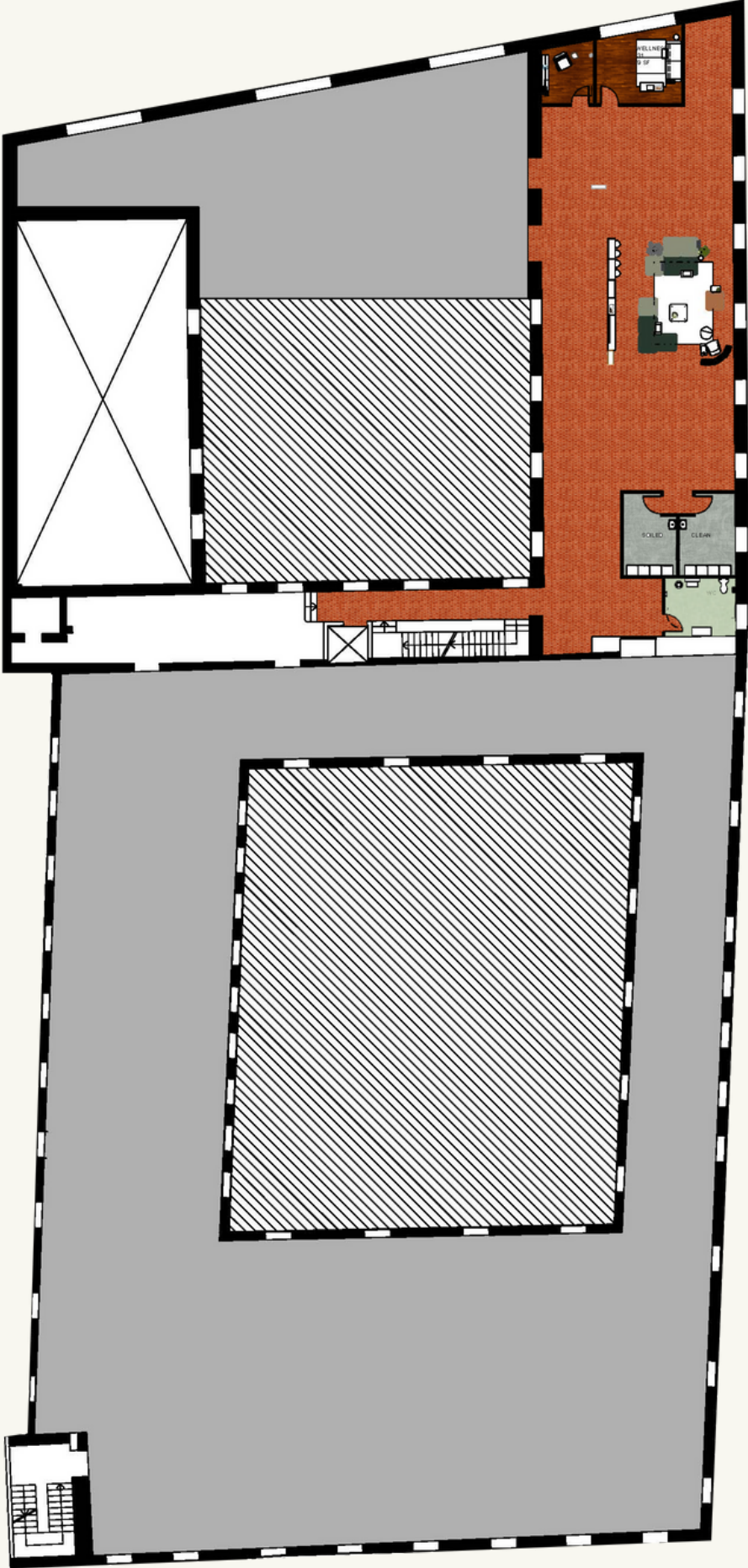




# FLOORPLANS



LEVEL 00-NTS



LEVEL 01-NTS



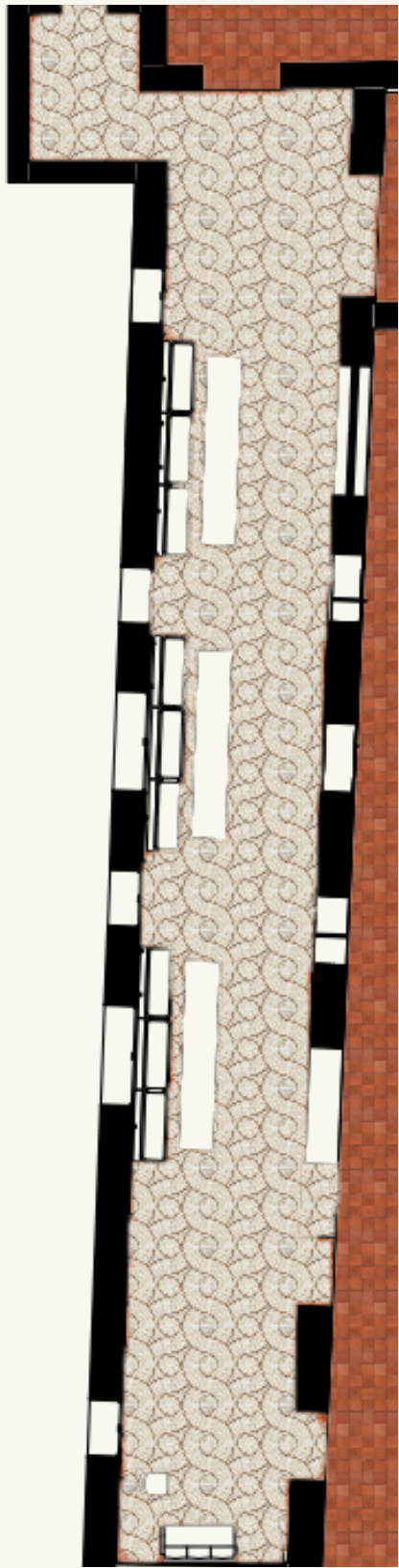


## FF&E KEY

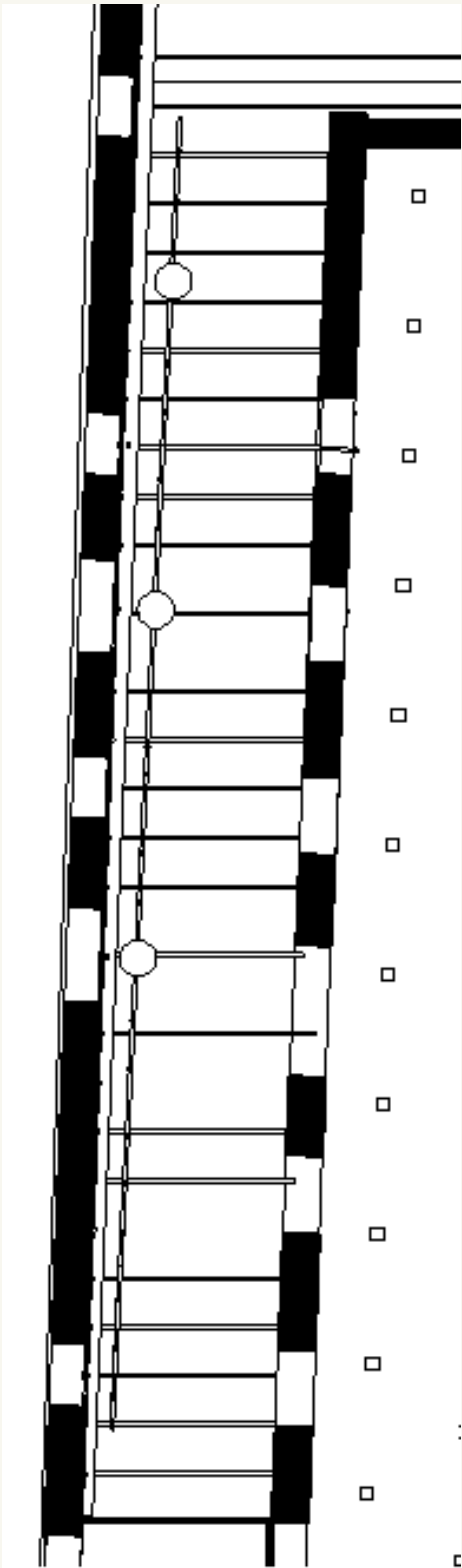
MARK	MANUFACTURER	MODEL
L-1	COOPER LIGHTING	Shaper Sense Drum Index Dimensional
L-2	COOPER LIGHTING	HALO- 6100 Tapered 6" Metal Baffle Trim
L-3	COOPER LIGHTING	Define LED Acoustic Luminaire
T-1	CUSTOM TABLE	CUSTOM TABLE
S-1	CUSTOM COUCH	CUSTOM COUCH
C-1	SILLAS DE MADEIRA	Uish HQ Chair - Natural Wood
C-2	OFS	Modern Amenity-Carolina
C-3	OFS	Stray physician's stool-Carolina



# CAFÉ SPACE RCP & FLOORPLAN



FLOORPLAN- NTS



RCP- NTS



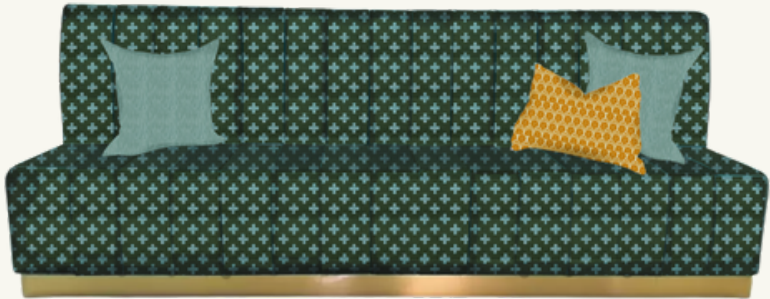
L-1



L-2



L-3



S-1



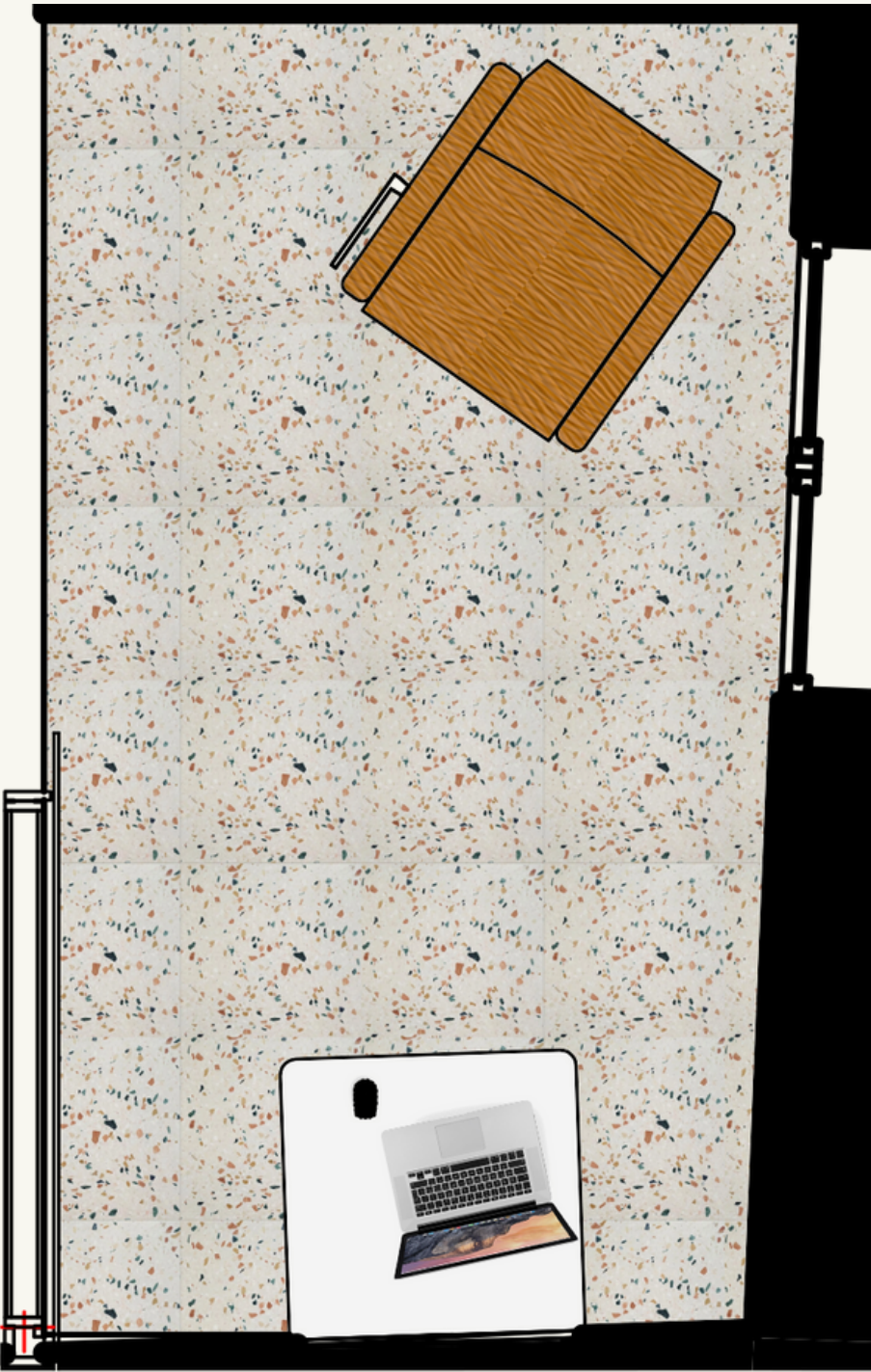
T-1



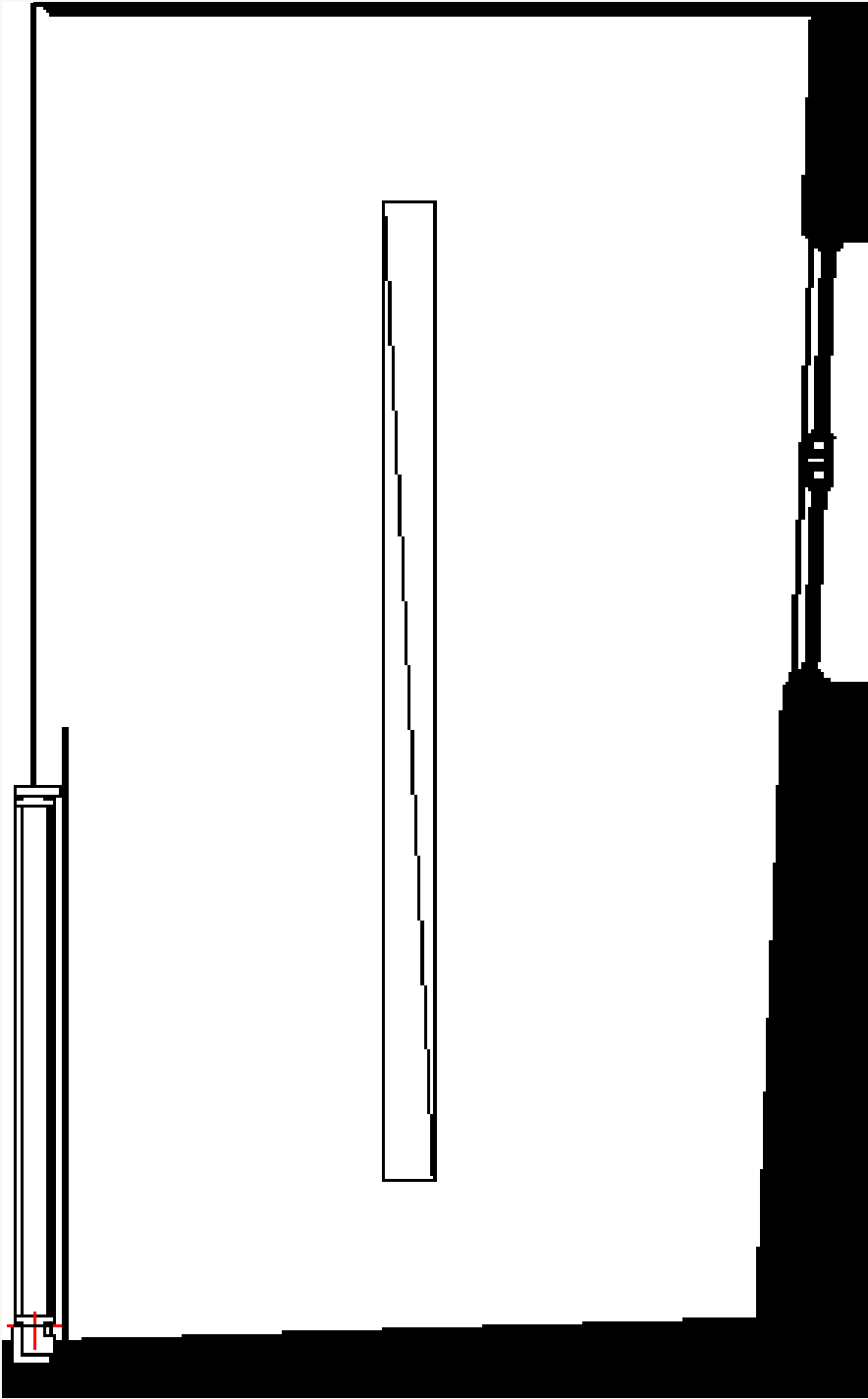
C-1







FLOORPLAN- NTS



RCP- NTS



L-3



L-2



C-2

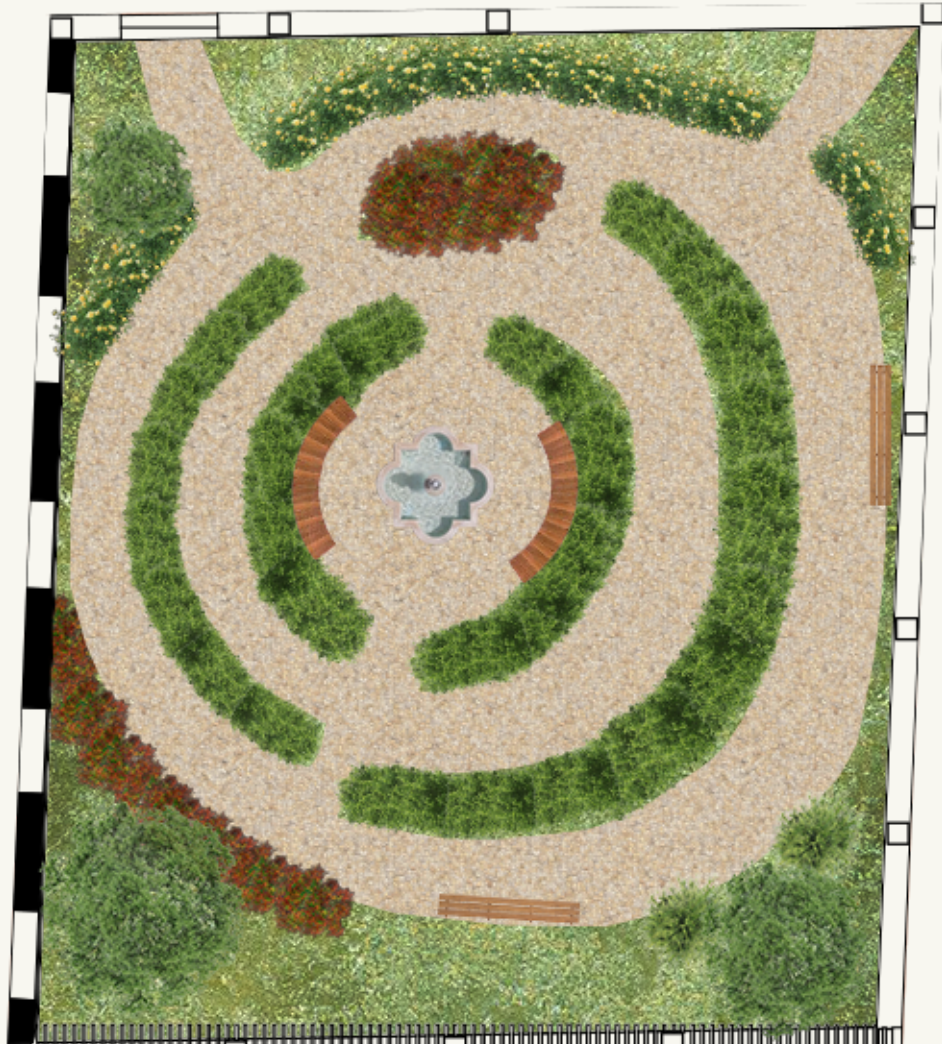


C-3

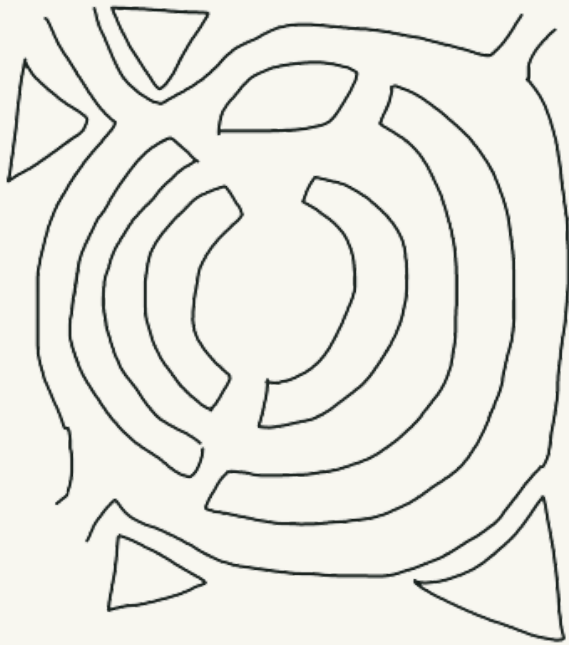




SPECIAL FEATURES



MEMORY GARDEN



WAYFINDING



Via de Guarigione



Via de Creatività

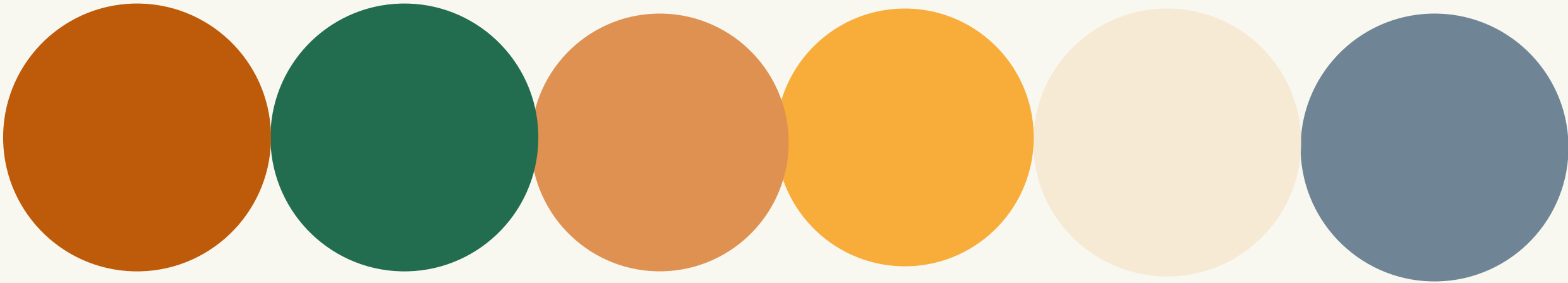
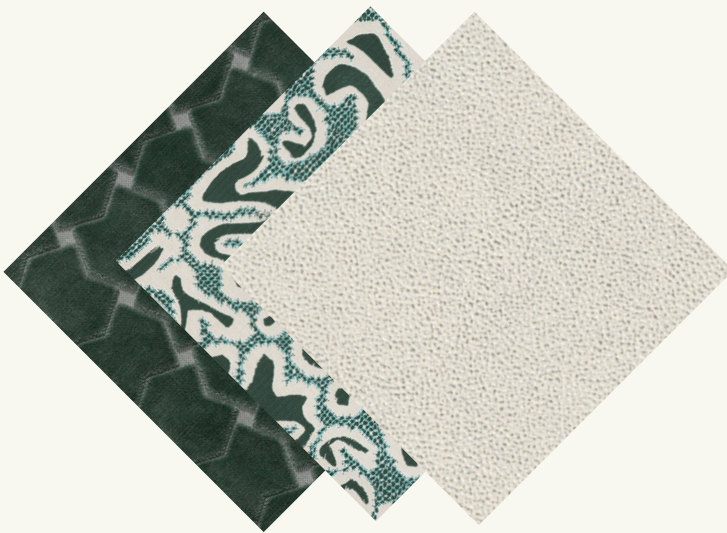
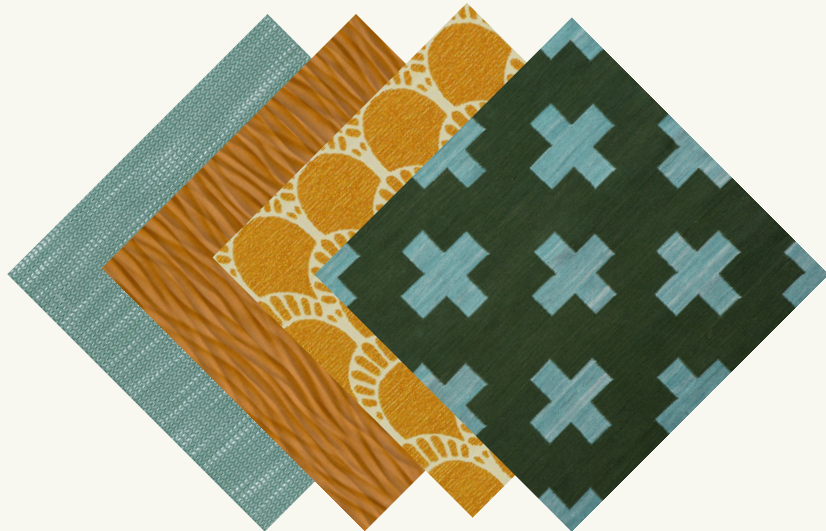


Via de Comunità





# FINAL FINISHES



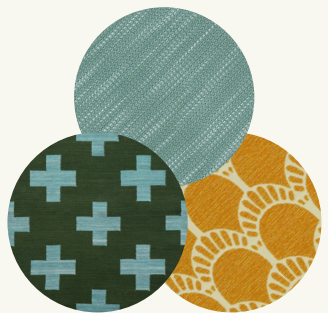
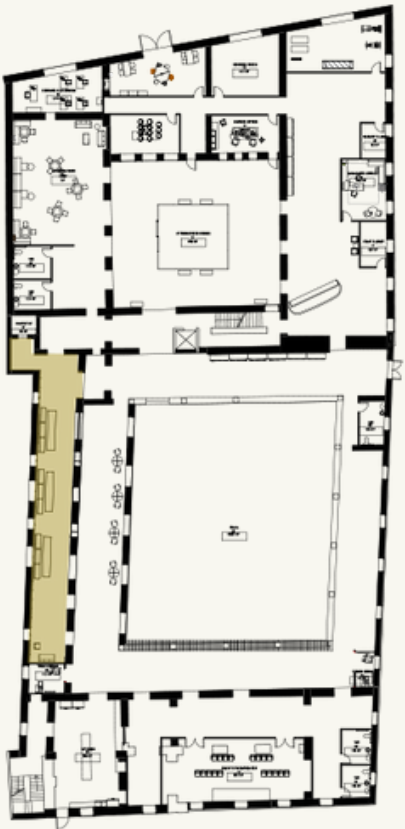
# MATERIALS

FINISH LEGEND		
MARK	MANUFACTURER	MODEL, NAME & COLOR
PT-1	BENJAMIN MOORE	COLOR #: BM CSP-1105
PT-2	SHERWIN WILLIAMS	COLOR #: SW6741
PT-3	SHERWIN WILLIAMS	COLOR #: SW6361
PT-4	SHERWIN WILLIAMS	COLOR #: SW6678
PT-5	SHERWIN WILLIAMS	COLOR #: SW7566
PT-6	SHERWIN WILLIAMS	COLOR #: SW9148
UPH-1	MAHARAM	STYLE: MALTA; COLOR: GILDED 09132297
UPH-2	MAHARAM	Plus by Alexander Girard , 1960, COLOR: 650093–002 Olive/Aqua
UPH-3	HBF TEXTILES	STYLE: RUSH; COLOR: 1063-67 Forest Green
UPH-4	ARC-COM	STYLE: MOHAVE; COLOR: Butterscotch #9
UPH-5	CARNEGIE	STYLE: Choreography; COLOR: 6180 4
UPH-6	CARNEGIE	STYLE: Hinge; COLOR: 6552 7
UPH-7	ARCHITEX	STYLE: Quarry; COLOR: Chalk
ACT-1	ARMSTRONG	STYLE: LRYA®PB, COLOR: WHITE
T-1	CEIPO	STYLE: HEXAGON, FINISH: COTTO RUGANTINO
T-2	CEIPO	STYLE: RECTANGLE, FINISH: COTTO CLASSICO
T-3	CARODECO	TERRACOTTA; STYLE: PIASTRELLA TERRAZZO SIENA
T-4	COTTOVIETRI	STYLE: COLORED CLAYS, COLOR: TUNDRA GREEN
T-5	COTTOVIETRI	STYLE: Engraved, graffiti and reliefs; COLOR: RABAT
T-6	COTTOVIETRI	STYLE: Decorated/Ancient Greece; COLOR: Magna Graecia Palmarola
T-7	COTTOVIETRI	STYLE: Decorated/Ancient Greece; COLOR: Orosei
T-8	COTTOVIETRI	STYLE: Compositions and hexagons; COLOR: leuca
T-9	MONADNOCK FLOORING	STYLE: BROWN MARBLE STONE MOSAIC (CUSTOM)
G-1	MAPEI	STYLE: 38 COLOR: AVALANCHE
SS-1	STONE ITALIANA	STYLE: NATIVE, COLOR: BIANCO ARTICO
P-1	LOCAL SUPPLY	STYLE: WOOD PANELS; COLOR: WHITE
W-1	LOCAL SUPPLY	OAK WOOD; FINISH: HARVEST STAIN
B-1	LOCAL SUPPLY	LOCAL RED BRICK
F-1	ARMSTRONG	STYLE: ALLURE 80771 COLLECTION: ASANA COLOR: CEDAR
CPT-1	SHAW CONTRACT	STYLE: AFTER HOURS COLOR: JET SET 47470



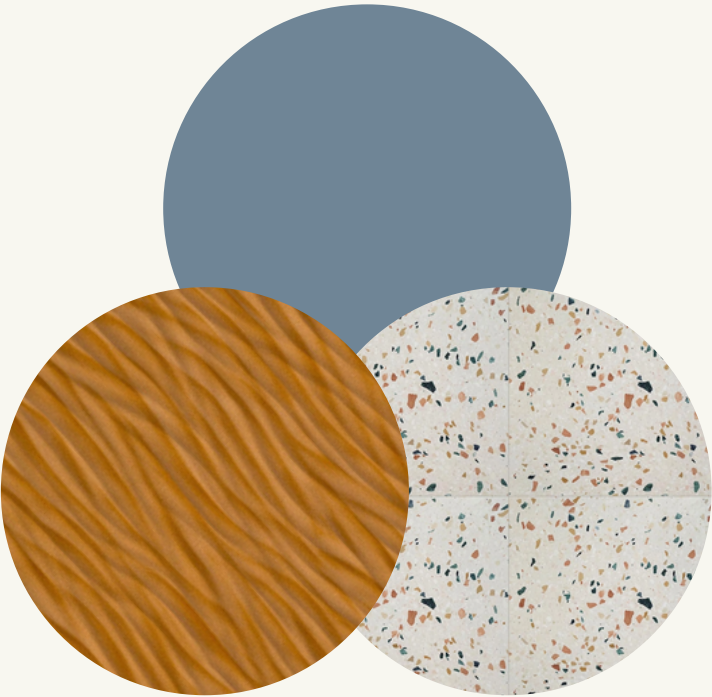
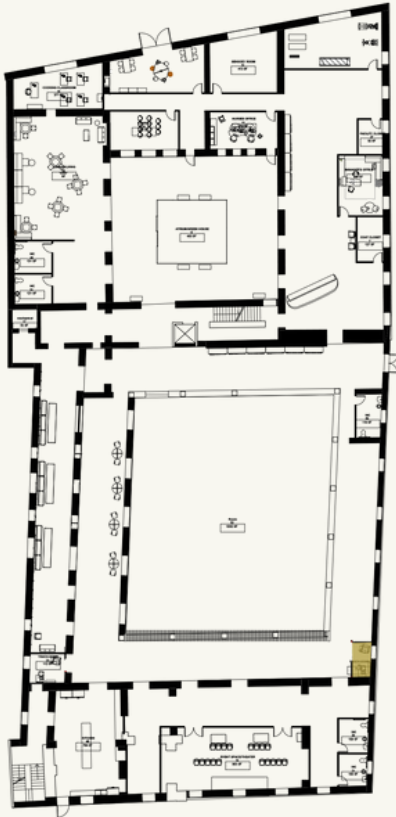


# RENDERED CAFÉ SPACE





# NURSE TOUCH-DOWN SECTION





# SECTIONS: CAFÉ SPACE



SECTION A- NTS

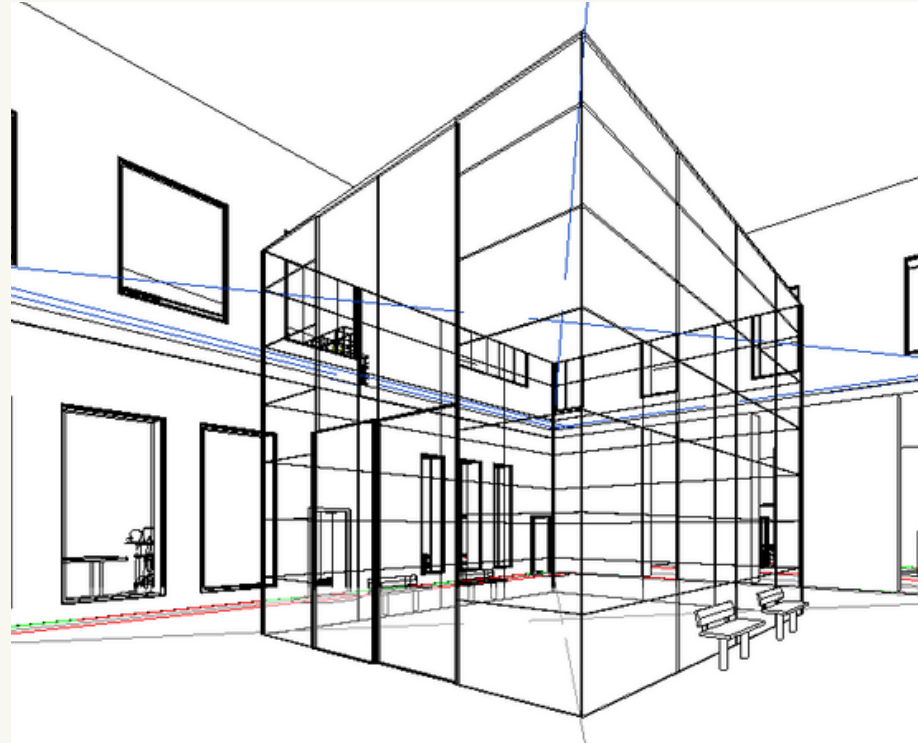


SECTION B- NTS





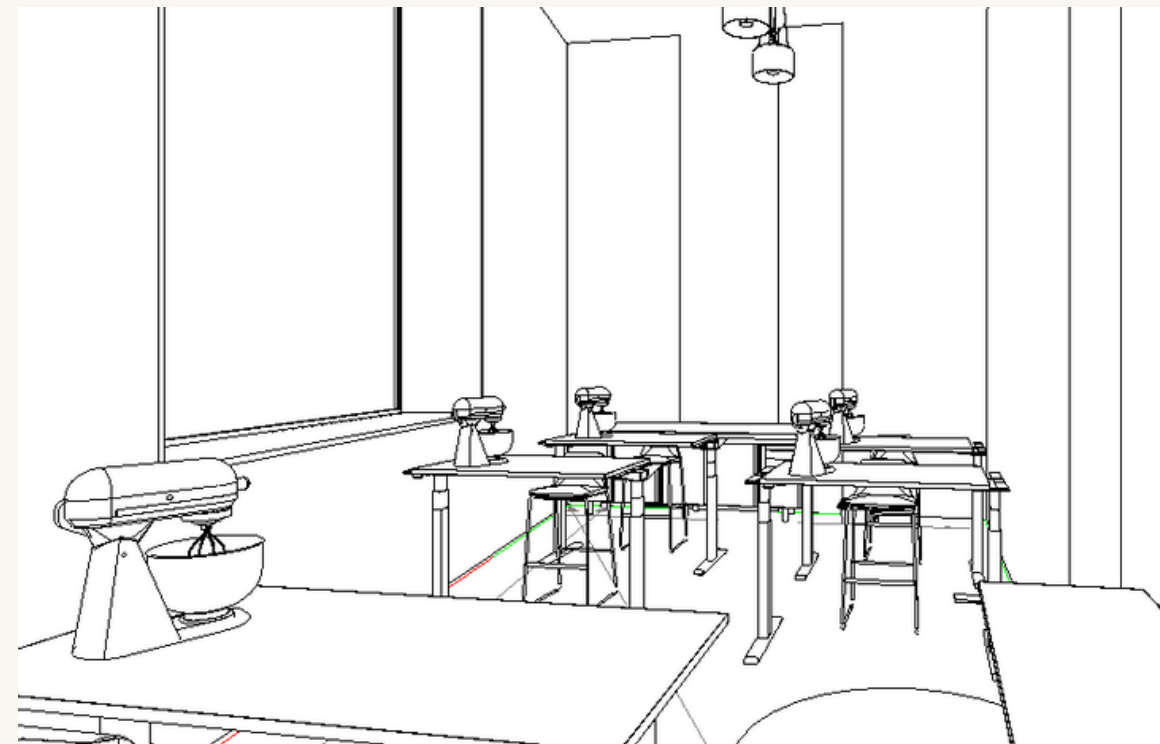
# LINED PERSPECTIVE DRAWINGS



COURTYARD W/GREEN HOUSE



NURSE TOUCH-DOWN STATION



COOKING CLASSROOM

